



# SACXS FACTS



*A Monthly Publication*

*Dedicated to the admiration, study, and proliferation of cacti and succulents.*

**Our meetings are held on the third Wednesday of each month except  
April, June and December,  
at the San Antonio Garden Center at Funston & New Braunfels Avenue.  
Doors are open at 6: p.m. – Next Meeting**

**October 19<sup>th</sup>**

## **President's Message:**

October is here and so is the heat. Are all of you ready for some cooler weather and some rain? Up here in Boerne another burn ban has gone into effect. Everything is burning like it is still July. Even some of our desert roses down by the greenhouse are showing signs of stress. There was a large grass fire up here the Friday before hurricane Rita hit. The fire was just down the street from our house. The county had about 15 trucks out here battling the blaze. Thankfully the fire was put out without any houses or people getting hurt. For those of you who did not know Jeannie and I had a fire on our Rita hit. The fire was just down the street from our house. The county had about 15 trucks out here battling the blaze. Thankfully the fire was put out without any houses or people getting hurt. For those of you who did not know Jeannie and I had a fire on our property back on July 4<sup>th</sup>. A bottle rocket got out of control and burned the front of our property. Although many of the natural yuccas on the property burned they are beginning to come back from the roots and looking as good as ever. I even found a coryphantha that survived the fire. And even the prickly pears are putting out new growth.

Well, it is hard to believe that it is almost time to start preparing for the fall. Jeannie just had the propane tank filled up with propane before the price goes up. You may want to also consider doing the same if need be to save a few dollars. Also, we had a bird nest cleaned out of the heater. For those of you who have outdoor heaters make sure and check them out pretty soon to avoid problems and potential fires the winter. Also, check out your greenhouses for tears or holes to help conserve the heat this winter.

Also, remember the TACCS meeting is this month. It will be on October 15; contact Claude Townsend at [ctownsend@satx.rr](mailto:ctownsend@satx.rr) or 210-655-8959 if you need any information about the meeting.

Finally, Lucile Lively has organized a fall plant sale at the Botanical Center on October 22. There will be signs directing everyone to the vendors. Several vendors will be participating in the event.

**Don Clark, President**



**PROGRAM:**

**CACTI OF CHILI (PART TWO)**

**BY Bob Barth**

~~~~~

**Refreshment volunteers:** Murphy's, Kibler's, CJE & Nancy Masterson

**Auction Plants donated by:** Murphy's, Kibler's, CJE & Tindall

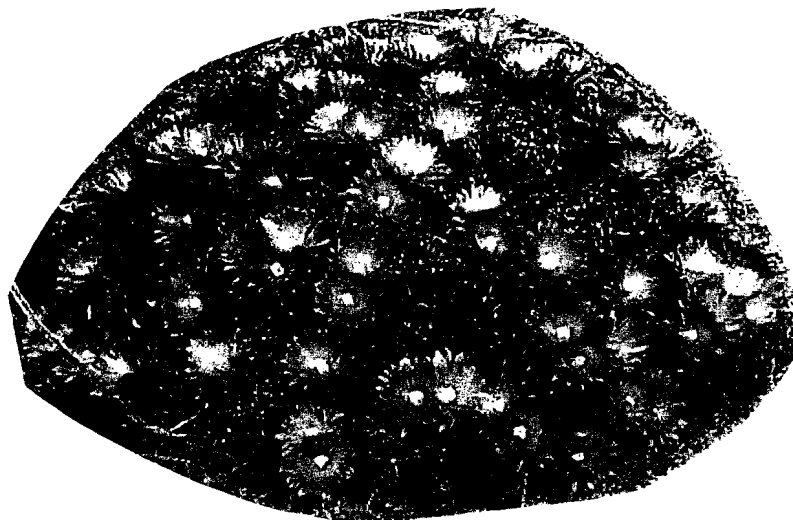
**Any one else want to donate?**

~~~~~

**CORYPHANTHA**

Are small to middle-sized globous to short-columnar tubercled cacti from Mexico and the South of the USA. Their bodies are not characterised by ribs, like e.g. Ferocactus, Thelocactus etc., but, like the closely-related Mammillarias by tubercles, which are arranged in spirals. These spirals are counted clockwise and counter-clockwise viewing the plants from above and they are always found in a constant relation, the so-called Fibonacci-series (5:8, 8:13, 13:21 etc.).

The name Coryphantha is from the Greek and means "flowering on the tip"; the flowers appear, contrary to Mammillarias, which flower in a circle around the top from one year old growth, in the youngest growth, which is in the center on top of the plant. Many of the flowers are quite large (up to 10cm), very often yellow, but sometimes also white or pink. The fruits are green and juicy, with dried flower remnants attached, the seeds are brown, smooth, with reticulate testa.



**This Coryphantha was grown by Cookie Saathoff in Organ, New Mexico**

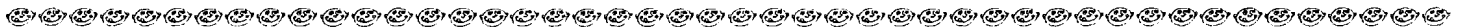
### **African Milk Tree (*Euphorbia trigona*)**

*Euphorbia hermentiana*, family: Euphorbiaceae

Needs frost protection, light shade,  
Origin: Tropical Western Africa.  
Grows up to 6 feet tall.  
Needs Moderate water in the summer and kept  
Dry in winter. Can be propagated from cuttings.

All parts of the plant are poisonous if ingested.  
Handling plant may cause skin irritation or allergic  
reaction.

Blooms white or off white.



### **Senecio mandraliscae**

Senecio includes over 1000 species from all over the world. A large number of these species are common perennial or annual weeds, but some are succulent & caudiciforms from tropical and subtropical areas. A number of succulent relatives have now been moved to the genus Kleinia.

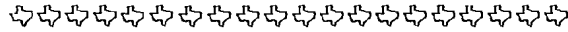
Avoid frost, needs full sun to light shade.  
Moderate water. Propagate from cuttings.

Grows up to 18 inches tall and 2 feet in diameter.

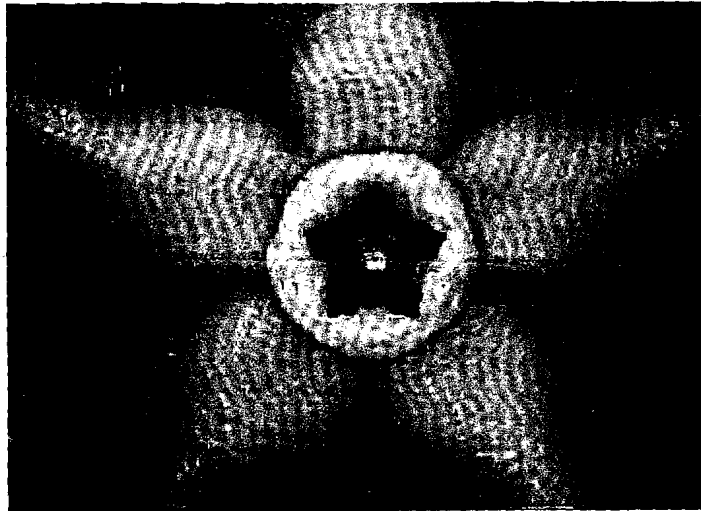
Origin: South Africa



Marvin Uhl – 1<sup>st</sup> <> Larry Murphy 21<sup>st</sup>



If I missed your birthday or anniversary please let me know.  
Norma T.



ORBEA SEMOTA – CLOSELY RELATED TO ORBEA WOODII THIS SPECIES FROM TANZANIA, KENYA AND RWANDA COMES IN TWO FLOWER FORMS, THE YELLOW FLOWERED FORM (PICTURED HERE) COMES FROM KIRICHWA, IN KENYA



**Stultitia hardyi**

An interesting plant from the Transvaal, with brittle stems that tend to break at the joints. Hence when repotting, it is difficult to preserve the plant intact and one tends to end up with a handful of cuttings. In addition, the stems tend to elongate and grow out of their pot, so a good specimen plant is a challenge. The stems become attractively marbled in a dark light. The attractive (but smelly) flowers, about 7.5 cm in diameter, generally open facing down on my plant and are therefore hard to photograph - except for this one.

A Monthly Publication Dedicated to the Admiration and Proliferation of Cacti & Succulents

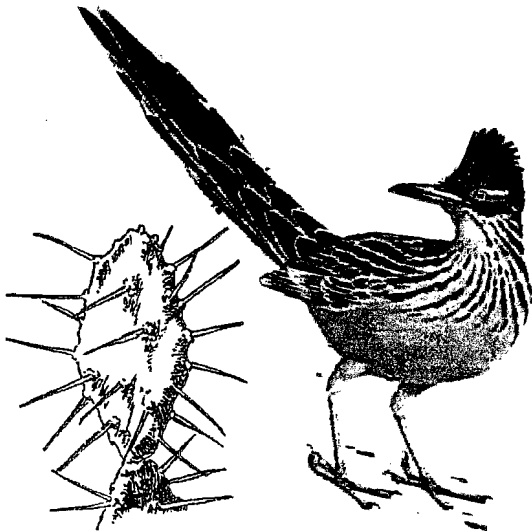
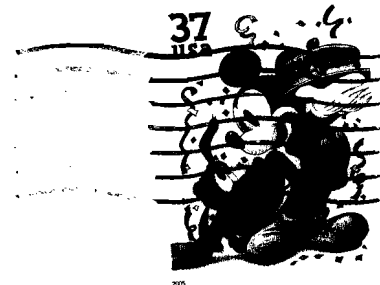
ELECTED AND APPOINTED OFFICERS AND DIRECTORS 2005/06

President	Don Clark	<a href="mailto:dclark@sanitorsinc.com">dclark@sanitorsinc.com</a>	830-232-5454
1st Vice President	Claude Townsend	<a href="mailto:ctownsend@satx.rr.com">ctownsend@satx.rr.com</a>	210-655-8959
2 <sup>nd</sup> Vice President	Norma Tindall	<a href="mailto:nartleo@aol.com">nartleo@aol.com</a>	210-695-8090
3 <sup>rd</sup> Vice President	Marty Ruona (Field Trips)	<a href="mailto:marty@rhinamicworkforce.com">marty@rhinamicworkforce.com</a>	210-655-5657
Recording Secretary	Ann Black	<a href="mailto:annblack@gvvc.com">annblack@gvvc.com</a>	830-336-2075
Publicity Secretary	Lucile Lively	<a href="mailto:lucilelively@satx.rr.com">lucilelively@satx.rr.com</a>	210-655-0971
Treasurer	Jimmy Black	<a href="mailto:jblack@amylin.com">jblack@amylin.com</a>	830-336-2075
Sgt At Arms	Doris Santee	<a href="mailto:dorcats@swbell.net">dorcats@swbell.net</a>	210-732-7832
Director	Sidney Yarbrough	<a href="mailto:gerald.yarbrough@prodigy.net">gerald.yarbrough@prodigy.net</a>	210-435-7057
Director	Bill Bauta	<a href="mailto:bautafam@ev1.net">bautafam@ev1.net</a>	210-497-1352
Director	Ernie Akers		210-521-5772
Show Chairman	Lucile Lively	<a href="mailto:lucilelively@satx.rr.com">lucilelively@satx.rr.com</a>	210-655-0971
Librarian	Paul Kibler		210-658-7561
Historian Secretary	Linda Vasquez		210-658-7561
Botanical Garden Rep	Lucile Lively		
Garden Center Rep	Sidney Yarbrough		
Fiesta Commission Rep	Claude Townsend		
Treasurer's Report Auditor	Don Clark		
Newsletter Editor	Norma Tindall	FAX 210-695-4502	

Happiness is found along the way, not at the end of the road” from Words To Live By

Editor

Norma G. Tindall  
PO Box 733  
Helotes TX 78023



DOUG COATES  
206 MITCHELL AVE  
SCHERTZ, TX 78154-1798

